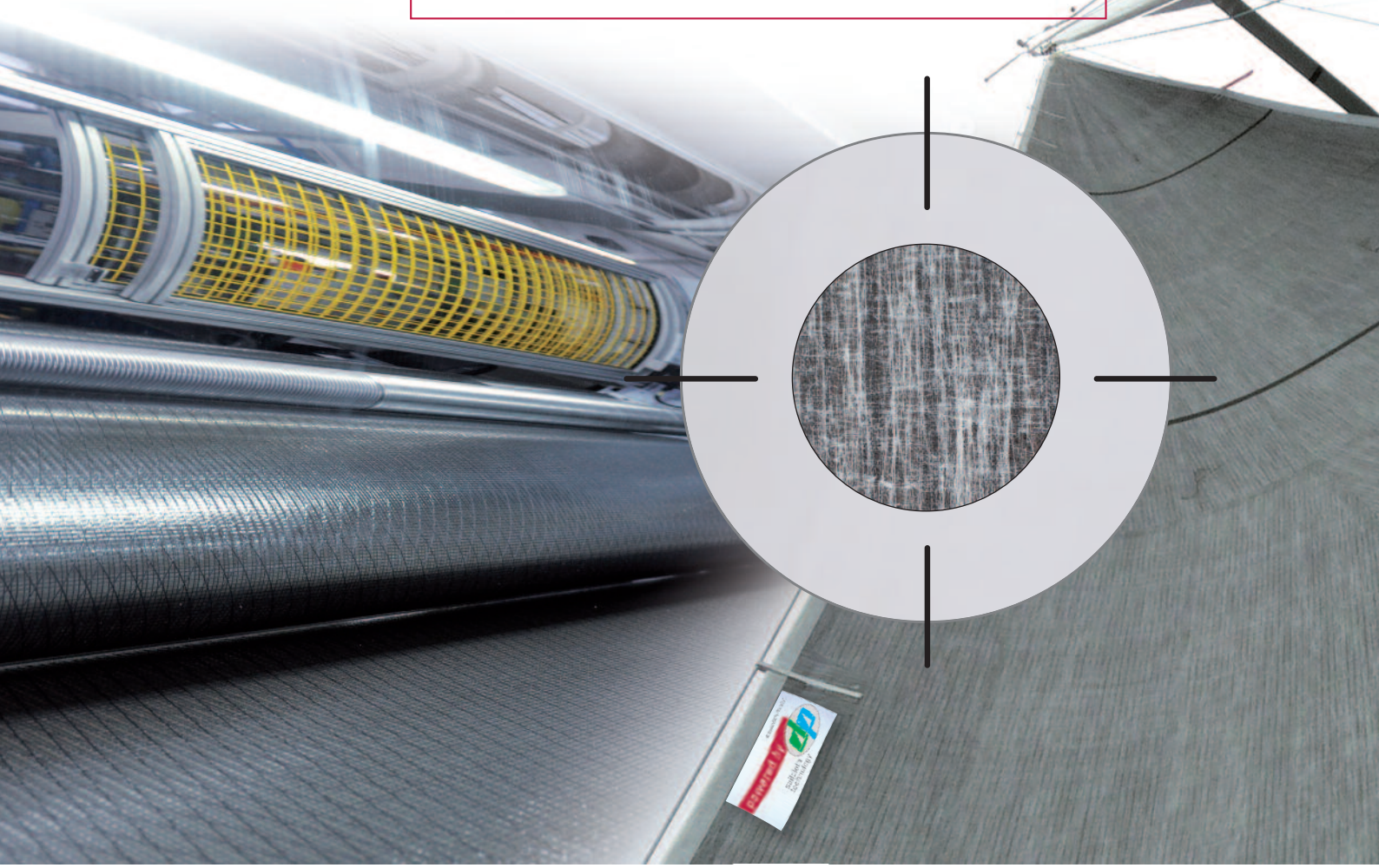


DIMENSION-POLYANT

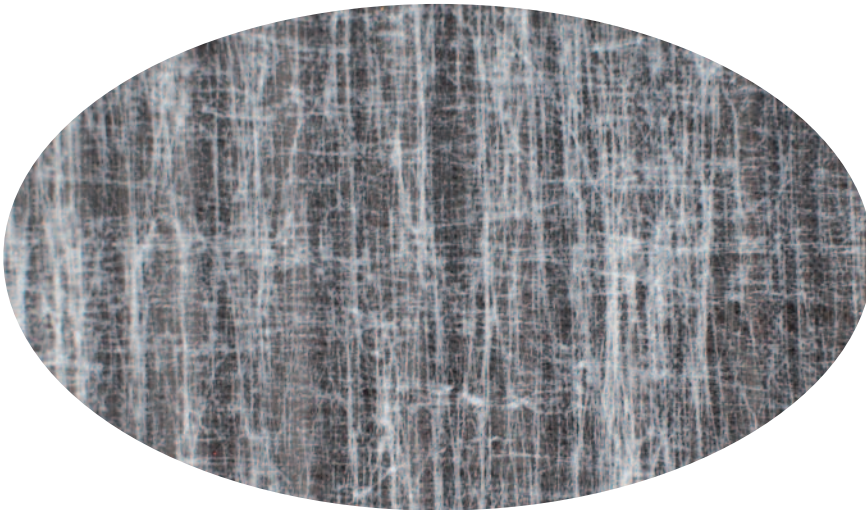
The Sailcloth Producer



GPL Lite Skin™

DIMENSION-POLYANT has developed the Lite Skin™* composite product to address an overlapping concern for both racers and cruisers: a light, rugged sailcloth skin for increased durability. The Lite Skin™ is a sheet of random array, non-woven filaments that provides increased abrasion resistance at a minimal weight gain. The Lite Skin™ is further accented with an opaque finish that virtually eliminates the traditional paneled sail appearance, delivering a sleek visual look. Lite Skin™ provides specific advantages when compared to the standard film / film and taffeta products.

* patent pending



GPL Lite Skin™

● ABRASION RESISTANCE

The Lite Skin™ * is designed specifically for the high end sailor who is looking for better life expectancy in his sail. The Lite Skin™ provides superior abrasion resistance compared to the film/film styles while protecting the inner scrim construction.

● WEIGHT

The Lite Skin™ is 1.3 sm-oz (56g/sqm) lighter than the double taffeta and about the same weight as the internal taffetas. The weight reduction results in more performance and a more durable race product and if used in a cruising application, the sail handling far exceeds other taffeta backed styles.

● WATER ABSORPTION

Compared to standard external taffetas, water absorption is significantly less with quicker drying due to faster evaporation of moisture.

● FABRIC APPEARANCE

Cosmetically, Lite Skin™ offers the same appearance from side to side and the opaque finish allows for easier sail trim and virtually invisible seams, eliminating the traditional paneled sail appearance. Panels may be flipped for ease of production and a consistent look across the DIMENSION-POLYANT fabric range.

● CONSTRUCTION

The Lite Skin™ fabrics allow for glued seams, resulting in less stretch under load. The unique Lite Skin™ composite also creates a softer hand, minimizes creasing and prevents film shrinkage.

GPL Lite Skin™
is available in the following weights:

GPL10 LS™
GPL14 LS™
GPL18 LS™
GPL21 LS™
GPL28 LS™

* patent pending